



JDS Digital Security Systems
P.O. Box 374
New Baltimore, MI 48047
(586) 749-6342
(734) 629-1555
www.jdssecuritysoftware.com

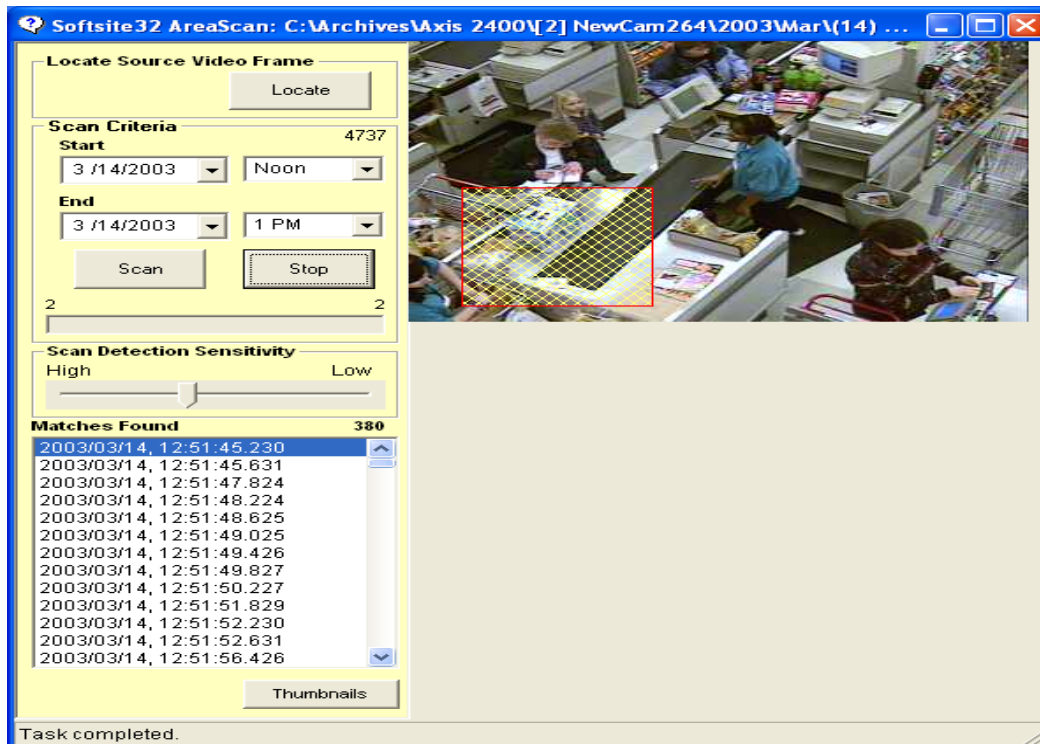
Softsite32 ssAreaScan ssAreaScan.exe 02/22/2005

ssAreaScan.exe is installed by Softsite32 Surveillance products automatically. The installed files related to this application are;

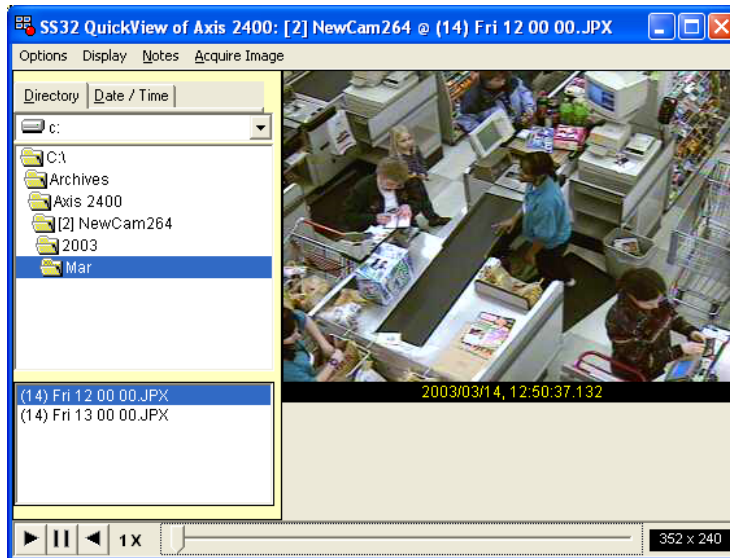
ssAreaScan.exe	The Application
ssAreaScan.ini	The Settings for the Application

ssAreaScan is a utility used to search any given camera's archives for objects that have been removed for a field of view. ssAreaScan gives the user the ability to mask an area of the field of view to determine down to the millisecond as to when the object has been removed.

Step 1. Launch ssAreaScan.exe from the Softsite32 Enterprise folder



Step 2. Click the Locate button to search for a camera archive



Click the Acquire Image button to load camera into ssAreaScan

Step 3 Pick the desired search Date and Time

Step 4 Left click and drag mouse over the loaded image to create a rectangular mask. This will determine area of the image to be scanned.

Step 5 Click Scan to start and Stop to end search

Matches Found

Lists the JPEG images that match the search criteria. Double click on the time stamp to pull up the video in QuickView.

**Image can be printed, saved to disk, or played back at various speeds for verification