



Digital Security Systems

Softsite32

Reliability, Performance, Value.

JDS Digital Security Systems

P.O. Box 374

New Baltimore, MI 48047

(586) 749-6342

(734) 629-1555

www.jdsnvr.com

www.softsite32.com

Introduction

NVR based Softsite32 Enterprise is a comprehensive Digital Video Surveillance Management System. High-resolution video feeds are streamed digitally from IP based cameras and video servers. Video is recorded digitally to generic computer disk drives with capacities from weeks to years' worth of instantly available, non-degrading video footage. Each frame is time stamped to sub-millisecond resolution and can be found with a few mouse clicks for hardcopy, review or export. Database-less archive design allows for virtually unlimited recording capability. Reliable operation with a 10 year track record of continuous use.

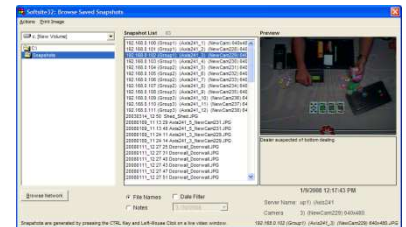


Product Family

- Softsite C2 (Command Center) Virtual Matrix Switcher; Display an array of video feeds on an array of monitors.
- Softsite32 Enterprise 2 Scalable to any number of feeds. Frame rates to 30 FPS on each camera feed.
- Softsite32 Enterprise X5 Low frame rate version of Enterprise 2. Full feature set at a lower cost per channel.
- Softsite 4 "Next Generation" NVR management system. Multiple video standards supported.

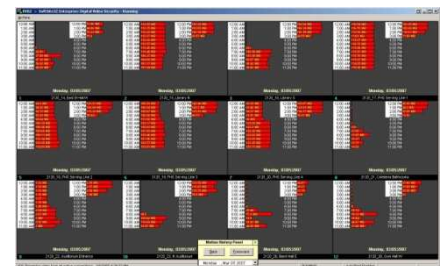
Components Included

- Softsite32 Main Application
- Softview
- Softview DVE
- AreaScan
- QuickView
- Archive Manager
- JDS Bench
- One Click Burn
- JDS Mini Viewer
- Table Manager
- Image Output Utility
- JPX Monitor



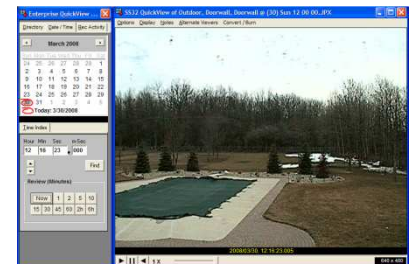
Advantages

- Industry leading speed; Video can be streamed at 30 FPS+ on every feed.
- Highest view / record frame rates per camera feed.
- One Click Burn simplified evidence gathering with a single click.
- Direct to Disk I/O allows for practically unlimited recording per camera feed.
- Cascading drives for instant archive failover and routing to other disk systems.
- Utilizes discreet JPEG video for the best possible video quality.
- Visual Scan allows a user to find activity in seconds.
- Non-modifying watermarking. Proven in US Federal Court.
- Compatible with 30+ IP video devices.
- Full support for analog legacy fixed and PTZ cameras.
- High Definition (HD) video capable without compromise.



Features

- Instant Snapshot function with annotation for active monitoring of events.
- Display all video feeds on a single monitor or multiple monitor arrays.
- Advanced video editing software with synchronized playback features.
- Standard NVRs can record hundreds of camera s at any frame rate
- Extensive fault tolerance. System reconnects automatically.
- Supports PTZ cameras with configurable automatic touring options.
- Email / Console alerts on video motion detection.
- Video is stored direct to disk; No database is required. Find video instantly.
- 360 degree camera support with advanced "de-warp" functions.



A functional demo version supporting **live** cameras with complete documentation is available for download at www.jdsnvr.com

SoftSite32 products are trademarks of JDS Digital Security Systems LLC and are Patented.

03/21/2010





Digital Security Systems

Softsite32

Reliability, Performance, Value.

JDS Digital Security Systems

P.O. Box 374

New Baltimore, MI 48047

(586) 749-6342

(734) 629-1555

www.jdsnvr.com

www.softsite32.com

Feature Comparison

Softsite is available in three versions, each with a common core interface, but with distinct performance differences. The chart below details the major differences. Enterprise C2 is a complement to these products and is designed to process video outputs recorded by the solutions listed below.

Camera feeds are licensed per camera server or video server and can be installed any number of times on any number of systems concurrently.

Feature	Enterprise X5	Enterprise 2	Softsite 4
Video Motion Detection	YES	YES	YES
Max Cams per Instance / PC	Unlimited	Unlimited	Unlimited
View / Rec. FPS per Instance / PC	Variable to 4,000+	25,000+ / 50,000+	25,000+ / 50,000+
Direct Video Stream Rate FPS	Variable to 2,500+	250,000+	250,000+
PTZ capability	YES	YES	YES
Guard Tour PTZ	YES	YES	YES
Record Capability	YES	YES	YES
Region of Interest	YES	YES	YES
Supports Full Streaming	YES	YES	YES
Intuitive Setup Interface	YES	YES	ADVANCED
Network Fault Tolerance	YES	YES	ADVANCED
Disk Mirroring	YES	YES	YES
Archive Viewer / Conversion	YES	YES	YES
Multiple installs per PC/Site	YES	YES	YES
Independent REC Paths	YES	YES	YES
Event Logging	YES	YES	YES
Upgradeable	YES	YES	YES

Features and performance vary with CPU configuration and capacity.

Options

- Java Web Client / Server interface with full video re-serving.
- OEM versions and Active X Automation Toolkits are available for user integration and development.
- JDS StreamCast™ multicast technology allows unlimited streams from camera feeds.
- POS (Point of Sale) and Card Access interfaces available for most any hardware platform.
- Dedicated streaming video toolkit for specialized video processing including facial recognition.
- JDS TruTrack Auto-tracking software. Follows objects accurately. Most popular PTZ cameras supported.
- JDS Variable Message server. Interface most any card access system, regardless of age, protocol or interface.

Detailed documentation is available online at www.JDSNVR.com.

A functional demo version supporting *live* cameras with complete documentation is available for download at www.jdsnvr.com

SoftSite32 products are trademarks of JDS Digital Security Systems LLC and are Patented.
03/21/2010

